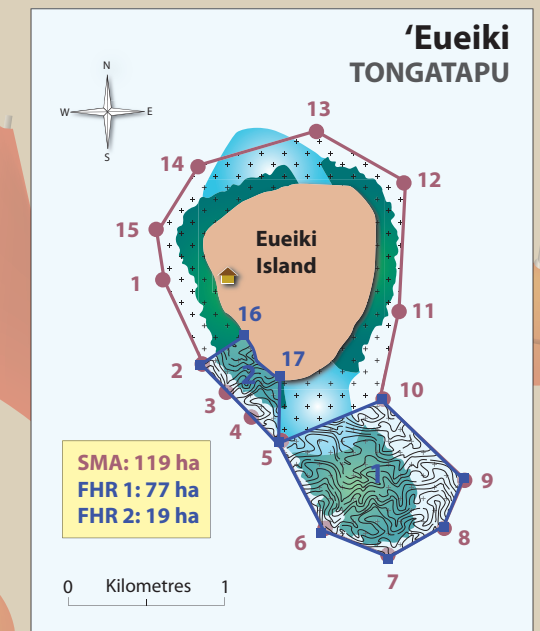
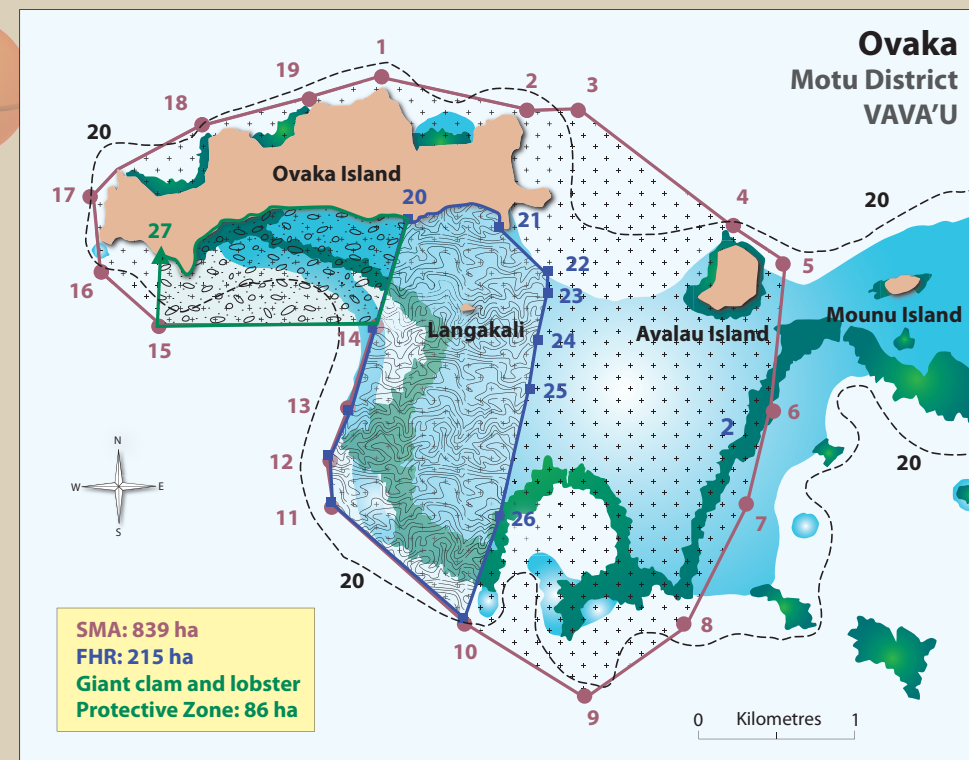
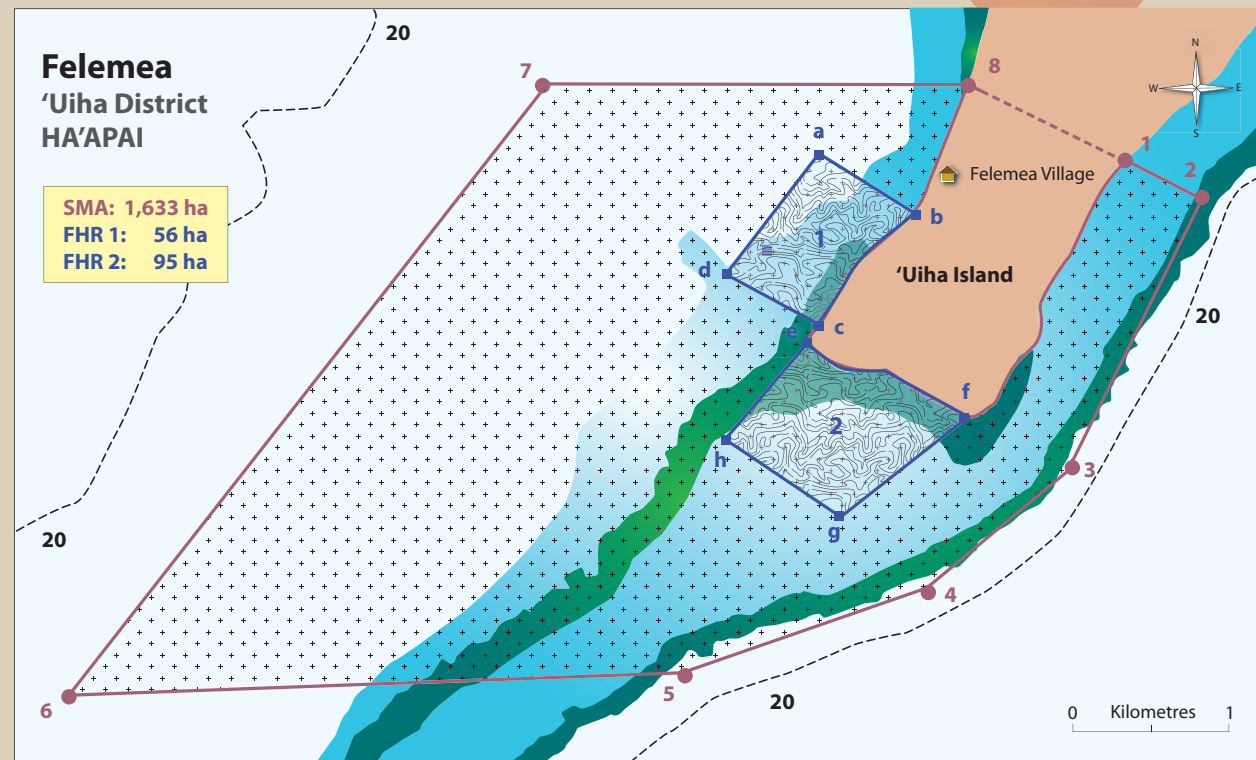
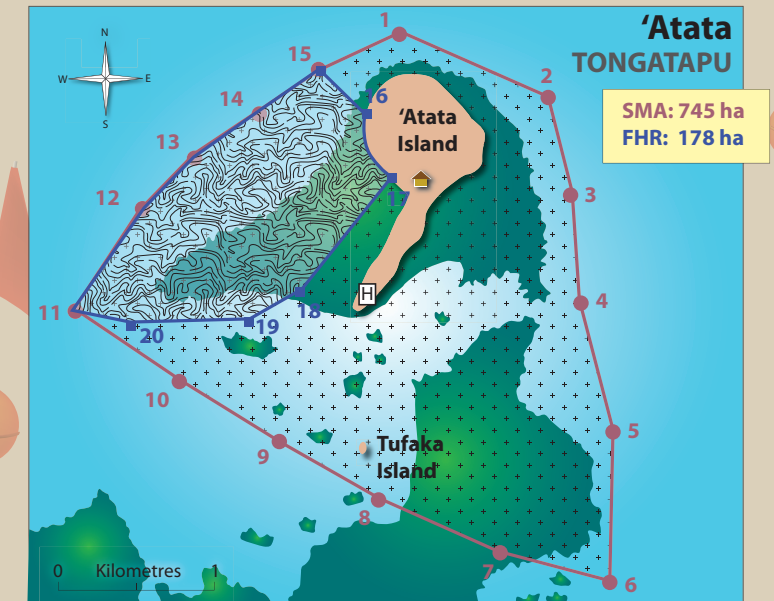
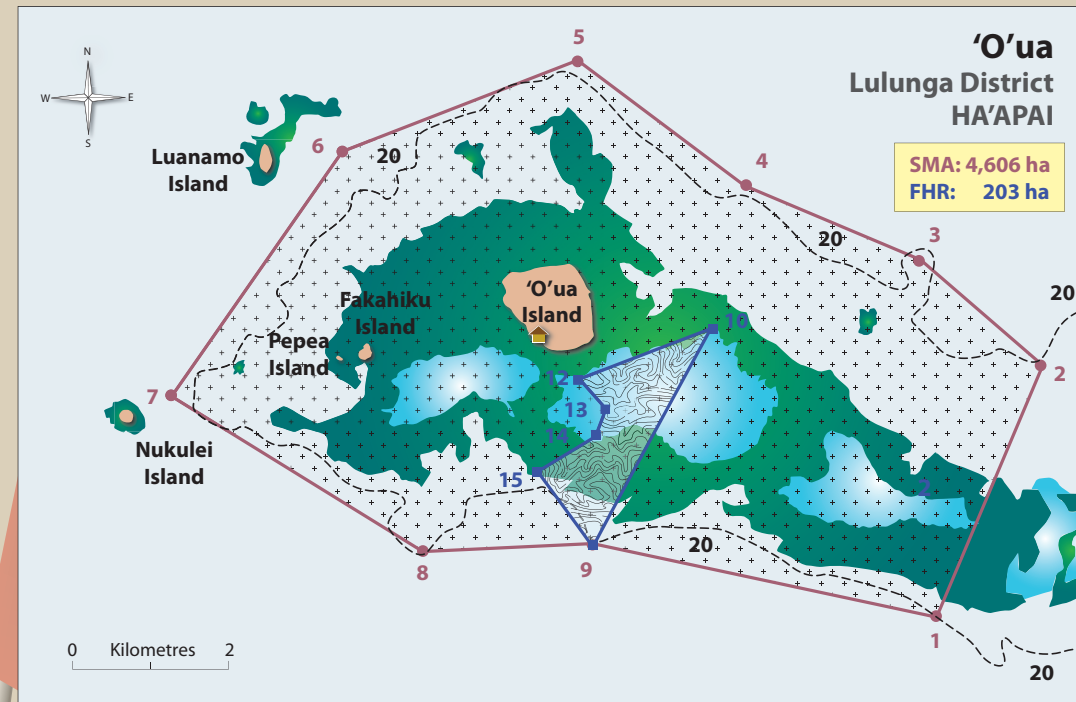
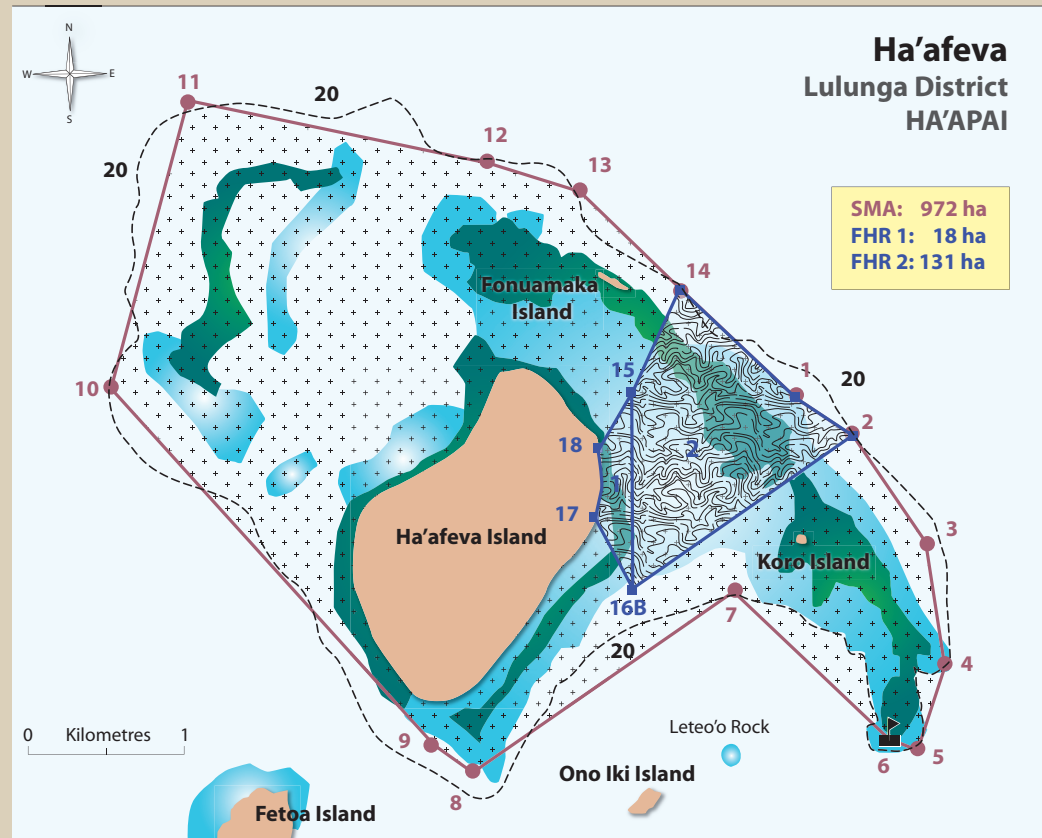


# COMMUNITY-MANAGED SPECIAL MANAGEMENT AREAS IN TONGA



Village	Shallow water (<5 fathoms)	FHR
Resort	Reef area	FHR boundary marker
Navigation marker	Land	Giant clam & lobster Protective Zone
20 fathom contour	SMA	Giant clam & lobster Protective Zone marker
'Uiha-Felemea border line	SMA boundary marker	



Under the Fisheries Management Act 2002, so far six local communities have been designated as Coastal Communities with Special Management Areas (SMAs), for the purpose of community-based fisheries management in their coastal areas. This was mainly due to their general concern of declining coastal fisheries resources which they significantly rely on for food and income.

These communities therefore take the leading role in managing their coastal fisheries resources with assistance from the Fisheries Division. Coastal community management committees (CCMCs) and coastal community management plans (CCMPs) were developed to assist in their management role. Key management objectives in their CCMPs include controlling fishing activities, restoring fish stock and habitat in no-fishing areas (Fish Habitat Reserves (FHRs)), raising community awareness on fisheries conservation and management, promoting sustainable fishing practices and improving living standards in the community. The Fisheries (Coastal Communities) Regulations 2009 were also gazetted to assist in the implementation of their CCMPs and to complement existing fisheries legislation for enforcement within SMAs.

It is their community vision and goal that their SMAs and management efforts will help revive the health and status of their coastal fisheries resources for current and future generations.

### GENERAL FISHING CONDITIONS FOR SMAS

- Only registered persons and fishing vessels listed in the Fishers Register and Fishing Vessels Register of the respective SMA, are authorized to fish in that SMA.
- Any other person not listed on the Fishers Register or the Fishing Vessels Register may apply for a fishing permit from CCMC to fish in SMA.
- No person shall use destructive fishing methods such as using metal bars and iron rods.
- No person shall harvest any marine organism for the aquarium industry which includes hard coral, soft coral, small invertebrates and aquarium fish.



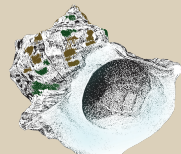
### Additional fishing conditions to the 'Atata SMA

In addition to the general fishing conditions above, no person shall be allowed to:

- Harvest any ark clam less than 45mm in length.
- Harvest any green snail species.
- Harvest any trochus species.
- Gut any Curryfish species at shore.



Ark clam



Green snail



Curryfish

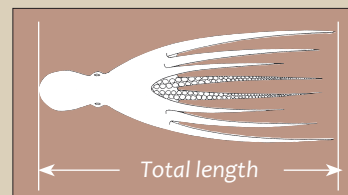


Trochus

### Additional fishing conditions to the 'Eueiki SMA

In addition to the general fishing conditions above, no person shall be allowed to:

- Harvest any octopus species under one foot in length.

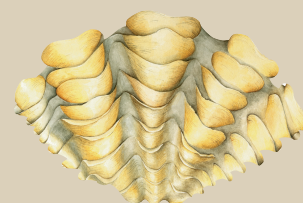


### GENERAL CONDITIONS FOR FHRs

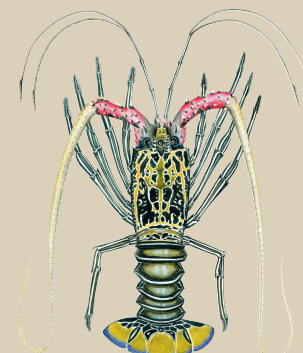
- No person shall access or undertake fishing of any nature in FHRs, unless:
  - o CCMC may allow access for observation, monitoring and restocking activities.
  - o CCMC may allow tourist activities (site-seeing).
  - o Any other activities shall require a CCMC endorsement and written authorization from the Secretary for Fisheries and be in accordance with such conditions as may be specified.
  - o In an emergency or circumstances involving the safety of a vessel or its crew.
- In the case of Ha'afeva's FHR Zone 1, boat passage and women's pandanus activities are permitted

### FISHING CONDITIONS IN THE GIANT CLAM AND LOBSTER PROTECTIVE ZONE

- No person shall undertake fishing of any nature for giant clam or lobster in this Protection Zone unless authorised by the Secretary for Fisheries and CCMC.



Giant clam



Lobster



Prepared by the Fisheries Division  
 Ministry of Agriculture & Food, Forests and Fisheries  
 P.O.Box 871, Nuku'alofa, Tonga  
 Tel: Tongatapu +676 21399, Ha'apai +676 60399,  
 Vava'u +676 70399  
 Fax: +676 23891  
 www.tongafish.gov.to



Secretariat of the Pacific Community (SPC)  
 BD D5 98848  
 Noumea Cedex, New Caledonia  
 Tel: +687 26.20.00 Fax: +687 23.38.18  
 spc@spc.int www.spc.int

©Copyright SPC 2010

Printed at Stredder Print Ltd. New Zealand / Layout by Youngmi Choi

# COMMUNITY-MANAGED SPECIAL MANAGEMENT AREAS IN TONGA

